



THE SMARTBOX AWNING COLLECTION

from Smart Blinds & Shutters



THE SMARTBOX AWNING COLLECTION...
combines the highest quality design and manufacture
with an incredible range of models and fabrics.



CONTENTS

The Awning Collection 4

 SMARTBOX: Puma 5

 SMARTBOX: Tiger 6

 SMARTBOX: Jaguar 7

 SMARTBOX: Panther 8

 SMARTBOX: Ocelot 9

Smart Home 10

THE SMARTBOX AWNING COLLECTION

Discover an extensive portfolio of UK manufactured awnings and solutions, backed by 160 years of history.

As a consumer, you know the importance of cost-effective investment to add value to your home or business. Whatever your requirements, our high-quality products will provide the solution for your project, whether it be standard or bespoke.

We have over 200 awning fabrics, either to blend into your domestic décor, or on the contrary, to make a powerful brand statement.

With a variety of hardware color options, your awning solution will be the right one for your project, creating a perfect match or the ideal contrast.

All our products meet UK health and safety standards and are fully automated. Optional lighting and heating units can be integrated into the installation, providing comfort in the cooler months.

Our qualified team have the skills to assist throughout the process of choosing the right shading solution for your home or your business.

Our UK manufacturer has been making shading products here in the UK for over 160 years in their family-run facility. They pride themselves today on that long history of quality So you know you're in good hands.



Puma



THE SMARTBOX AWNING COLLECTION



Technical Specifications

MAXIMUM WIDTH (mm)	5000			
MAXIMUM PROJECTION (mm)	3000			
PROJECTION (mm)	1500	2000	2500	3000
MINIMUM WIDTH (mm)	1880	2380	2880	3380

Award winning design and style manufactured in the UK

The compact Puma cassette effectively protects both the fabric and mechanism, providing a long awning life. Elegantly shaped end caps maintain a smooth design.

High performance components and precision craftsmanship guarantee perfect functioning and longevity. The streamlined, high strength extruded brackets ensure simple and fast installation, even on difficult façades.

All of this with a standard 5-year guarantee on parts, it's a perfect combination of quality and affordability.

- Standard RAL colour: White (RAL 9010) - Powder coating to your chosen RAL optional extra
- Corrosion resistant, powder coated, extruded aluminium hard ware, with stainless steel components
- Fully adjustable pitch settings from 15° to 75°
- 2 x 4mm tear resistant steel cables, guaranteeing at least 25,000 movements
- TUV quality marked, CE safety marked, complying with CEN standards
- Face-fix or top-fix installation options
- RTS Somfy Motor operation, with wind sensor for auto retraction
- Up to projection 2000mm, wind class 3; above 2000mm, wind class 2
- Quantity of brackets; 2



THE ARM
The slender arm with a PUR sheathed 2 cable band guarantees more than 25,000 movements.

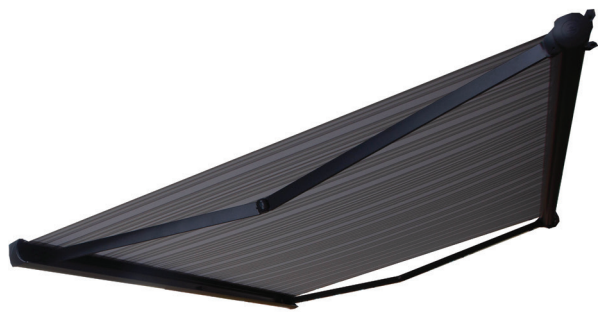


THE COVER
The cover closes against the cassette front profile



THE TECHNOLOGY
Cast aluminium parts and advanced mechanism guarantee a simple inclination adjustment.

THE SMARTBOX AWNING COLLECTION



Technical Specifications

MAXIMUM WIDTH (mm)	6000	
MAXIMUM PROJECTION (mm)	4000	
PROJECTION (mm)	3000	4000
MINIMUM WIDTH (mm)	3400	4400

Weather-proof and stylish, manufactured in the UK

The advanced technology used in the Tiger brings a series of advantages to guarantee efficiency throughout exposure to the elements.

Our anthracite cassetted awning, the Tiger has a sleek design with a very compact structure. Even in tough weather conditions, it can provide excellent weather protection.

Not only does this benefit the user but the strength also increases the durability of the product life span, meaning the Tiger is a perfect domestic and commercial grade awning.

- Standard RAL colour: Textured Anthracite (DB 703)
- Corrosion resistant, powder coated, extruded aluminium hardware, with stainless steel components
- Fully adjustable pitch settings from 6° to 60°
- Incorporating the SPLENDOR invisible arm tensioning system, providing greater strength and durability
- TUV quality marked, CE safety marked, complying with CEN standards
- Face-fix or top-fix installation options
- RTS Somfy Motor operation, with wind sensor for auto retraction
- Wind Class 2
- Quantity of brackets; 2
- Optional LED lighting can be installed in the arms, creating an ambient atmosphere beneath the awning

www.smartblinds.org



THE INSTALL

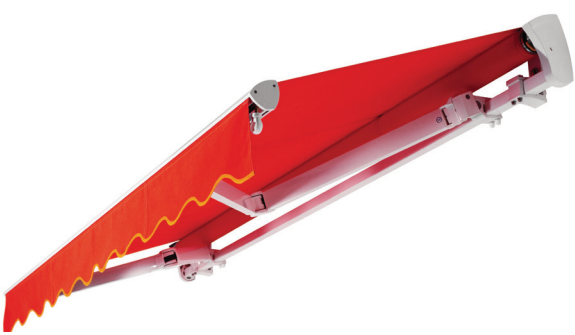
Simplicity and ease of installation helps speed up the process of set up on-site.



THE DESIGN

Great strength and a stylish aesthetics provide an allround terrific product for many different applications.

THE SMARTBOX AWNING COLLECTION



Technical Specifications

MAXIMUM WIDTH (mm)	18000					
MAXIMUM PROJECTION (mm)	4000*					
PROJECTION (mm)	1500	2000	2500	3000	3500	4000
MINIMUM WIDTH (mm)	1980	2480	2980	3480	3980	4480

*4000mm as standard, 4500mm projection available on request, reduces wind class from 3 to 2

High quality and style, manufactured in the UK

The Jaguar system is the strongest non-cassette patio awning manufactured in the UK.

The 4000mm projection can withstand strong winds, whilst sustaining the sturdy and elegant properties required from an awning.

Top quality fabrics and technical systems come together in the A101: Jaguar. Expert manufacturing will guarantee reliable functionality and durability.

- Standard RAL colour: White (RAL 9010) Powder coating to your chosen RAL optional extra
- Corrosion resistant, powder coated, extruded aluminium hardware, with stainless steel components
- Fully adjustable pitch settings from 15° to 45°
- 4 x 4mm tear resistant steel cables, guaranteeing at least 75,000 arm operations
- Multi-installation points, with crossover arm option, allowing a projection larger than the awning width
- TUV quality marked, CE safety marked, complying with CEN standards
- Face-fix or top-fix installation options
- RTS Somfy Motor operation, with wind sensor for auto retraction
- Wind Class 3
- Quantity of brackets; between 2 to 6 dependent on size

www.smartblinds.org



THE ARM

At least 75,000 arm operations are guaranteed thanks to tear resistant steel cables.



THE INSTALL

Strength and sturdiness provide a simple install of the Jaguar, using a square bar fixing with multiple brackets.

THE SMARTBOX AWNING COLLECTION



Technical Specifications

MAXIMUM WIDTH (mm)	18000					
MAXIMUM PROJECTION (mm)	4000*					
PROJECTION (mm)	1500	2000	2500	3000	3500	4000
MINIMUM WIDTH (mm)	1980	2480	2980	3480	3980	4480

*4000mm as standard, 4500mm projection available on request, reduces wind class from 3 to 2

High quality and style,
manufactured in the UK

The Panther system is the strongest patio awning manufactured in the UK. Even at a 4000mm projection it can withstand strong winds, whilst showcasing an elegant yet compact, sturdy awning.

Multi-installation points with cross-over arm options allow for solutions in many applications. Only the finest technical systems and fabrics are used within the design.

Top quality materials and precision craftsmanship go hand in hand to guarantee perfect functionality and durability.

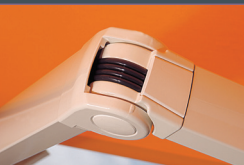
- Standard RAL colour: White (RAL 9010) - Powder coating to your chosen RAL optional extra
- Corrosion resistant, powder coated, extruded aluminium hardware, with stainless steel components
- Fully adjustable pitch settings from 15° to 45°
- 4 x 4mm tear resistant steel cables, guaranteeing at least 75,000 arm operations
- Multi-installation points, with crossover arm option, allowing a projection larger than the awning width
- TUV quality marked, CE safety marked, complying with CEN standards
- Face-fix or top-fix installation options
- RTS Somfy Motor operation, with wind sensor for auto retraction
- Wind Class 3
- Quantity of brackets; between 2 to 6 dependent on size

www.smartblinds.org



THE INSTALL

Strength and sturdiness provide a simple install of the Panther using a square bar fixing with multiple brackets.

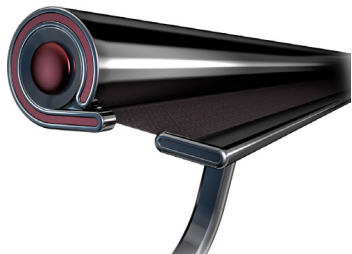


THE ARM

With 4x4mm tear resistant steel cables, at least 75,000 arm operations are guaranteed.

Ocelot

THE SMARTBOX AWNING COLLECTION



Technical Specifications

MAXIMUM WIDTH (mm)	4800
MAXIMUM PROJECTION (mm)	1600

Versatile shading
all year round

The A105: Ocelot Drop-Arm awning is neat and versatile. A very cost effective method of shading and screening; a sturdy, but lightweight, system.

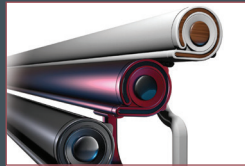
Operating from a fixed pivot point, the A105: Ocelot's arm drop is the same as its projection.

These Drop-Arm awnings can be stopped exactly in the position required.

If low lying sun is a problem, they can be extended to 155° enabling to shade to cover most of the window if necessary.

- Choice of any RAL colour
- Corrosion resistant, powder coated, extruded aluminium hardware, with stainless steel components
- Slim, flush cassette ensuring that the fabric and components are protected from weather when retracted
- Fully adjustable pitch settings from 0° to 60° for ultimate sun protection, 365 days a year
- TUV quality marked, CE safety marked, complying with CEN standards
- Wind class 2
- RTS Somfy Motor operation option

www.smartblinds.org



PROTECTED

Fully protected by the means of its cassette, the A105: Ocelot is fully encased when retracted to keep it safe through all kinds of weather.



ULTIMATE SHADE

The design of this product means that it can catch of block sun as much as you like, up to 155° to suit your requirements.



SMART HOME

Smart living starts with TaHoma®

Somfy Smart Home puts you in control, making your life easier, more comfortable and gives peace of mind, wherever in the world you are.

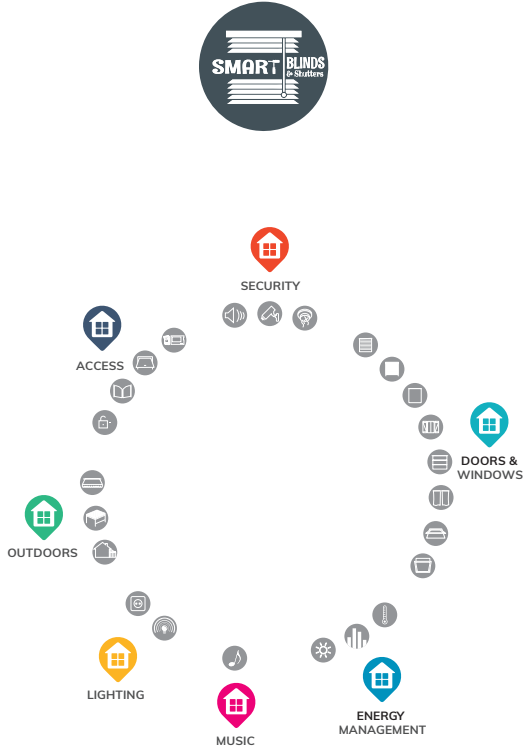
Monitor and operate your awnings, window blinds, lights, electrical equipment, heating, garage door and gate with your smartphone, tablet or voice.

You can adjust everything about the Somfy Smart Home System to accommodate your personal preferences - it can be monitored and operated from anywhere in the world.

Keep an eye on your home using cameras and movement detectors for home surveillance, for great peace of mind.

Somfy TaHoma is a smart box and the heart of your Smart Home. It links you to your home via the smart TaHoma app.

These solutions are extremely easy to use and can be installed with very little trouble. You can add products whenever it suits your needs or your budget. Get the most from your home with the least possible effort.



SMART AWNINGS...

easy to use technology to ensure you're supplied with the utmost convenience and with a product that's made to last.



THE SMARTBOX AWNING COLLECTION



General enquiries:

Tel: 01635 866600

Email: info@smartblinds.org

Showroom:

26 High Street, Thatcham,
Berkshire, RG19 3JD

www.smartblinds.org